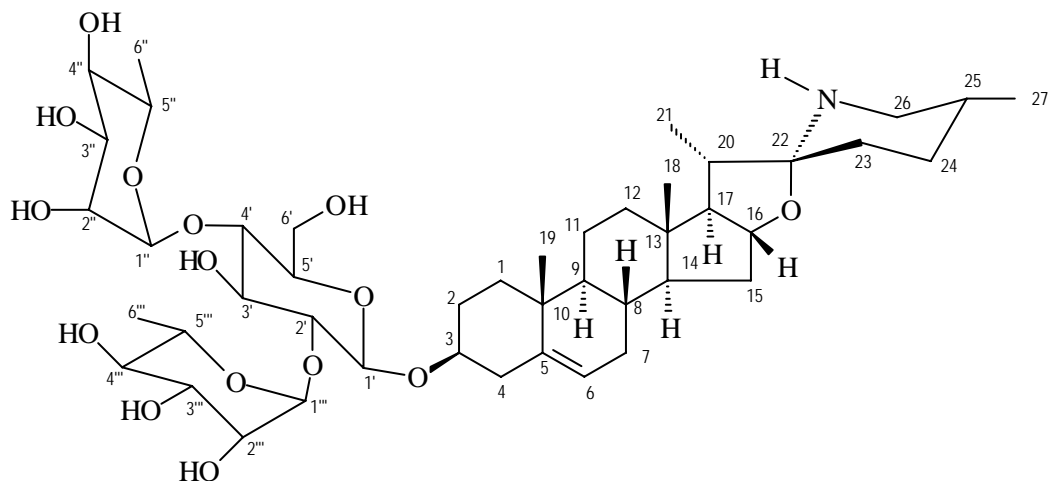
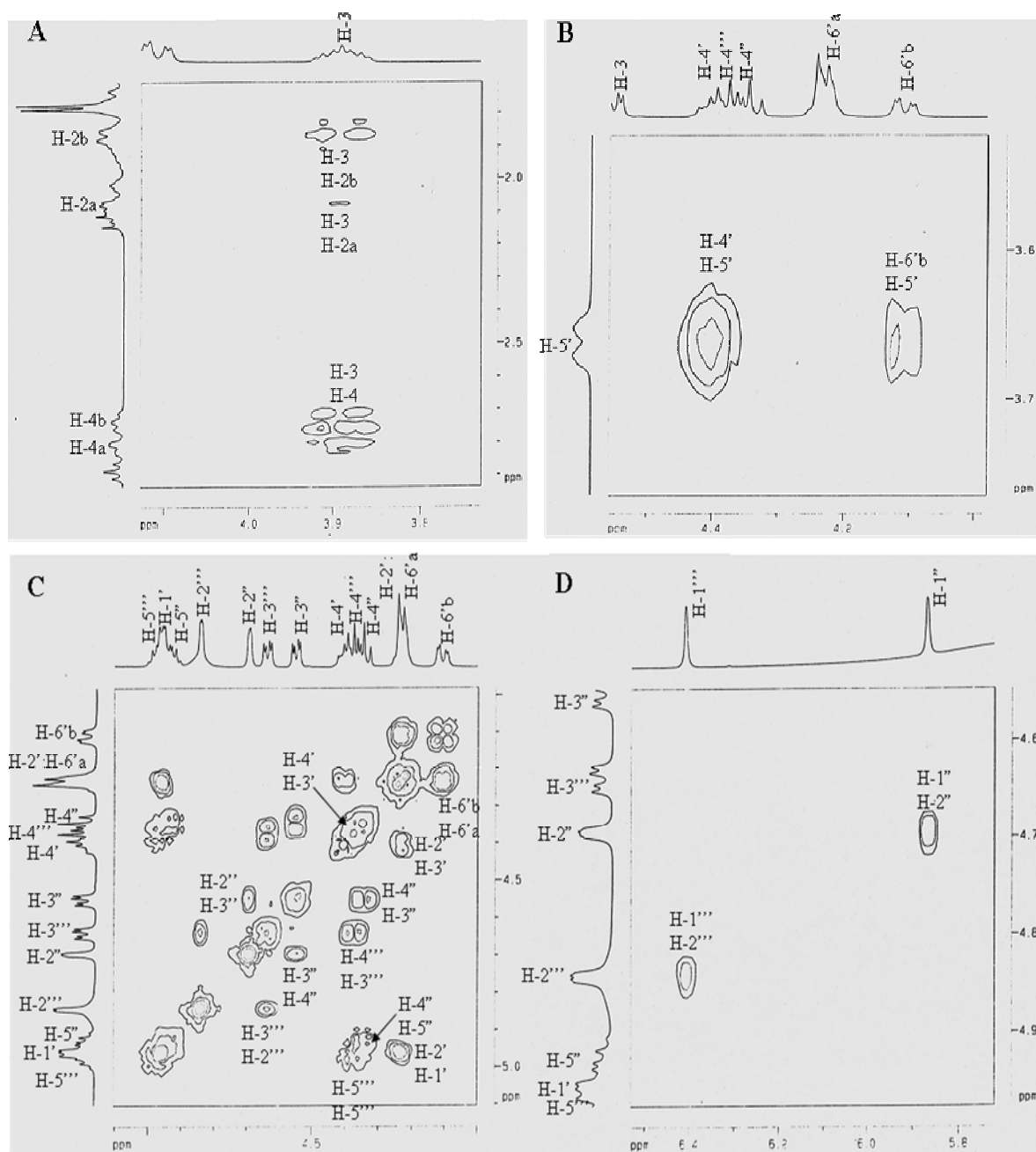
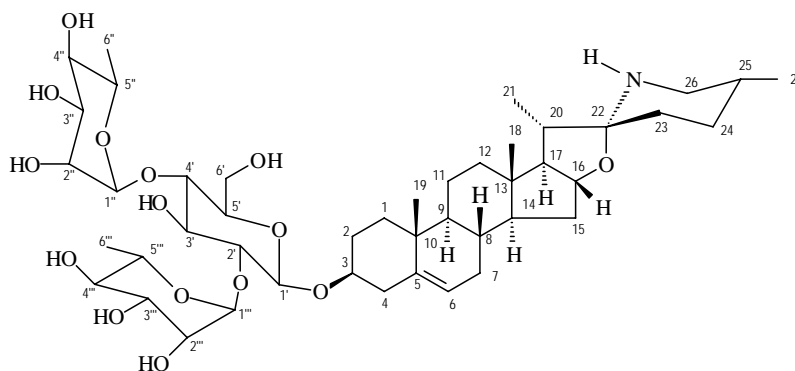


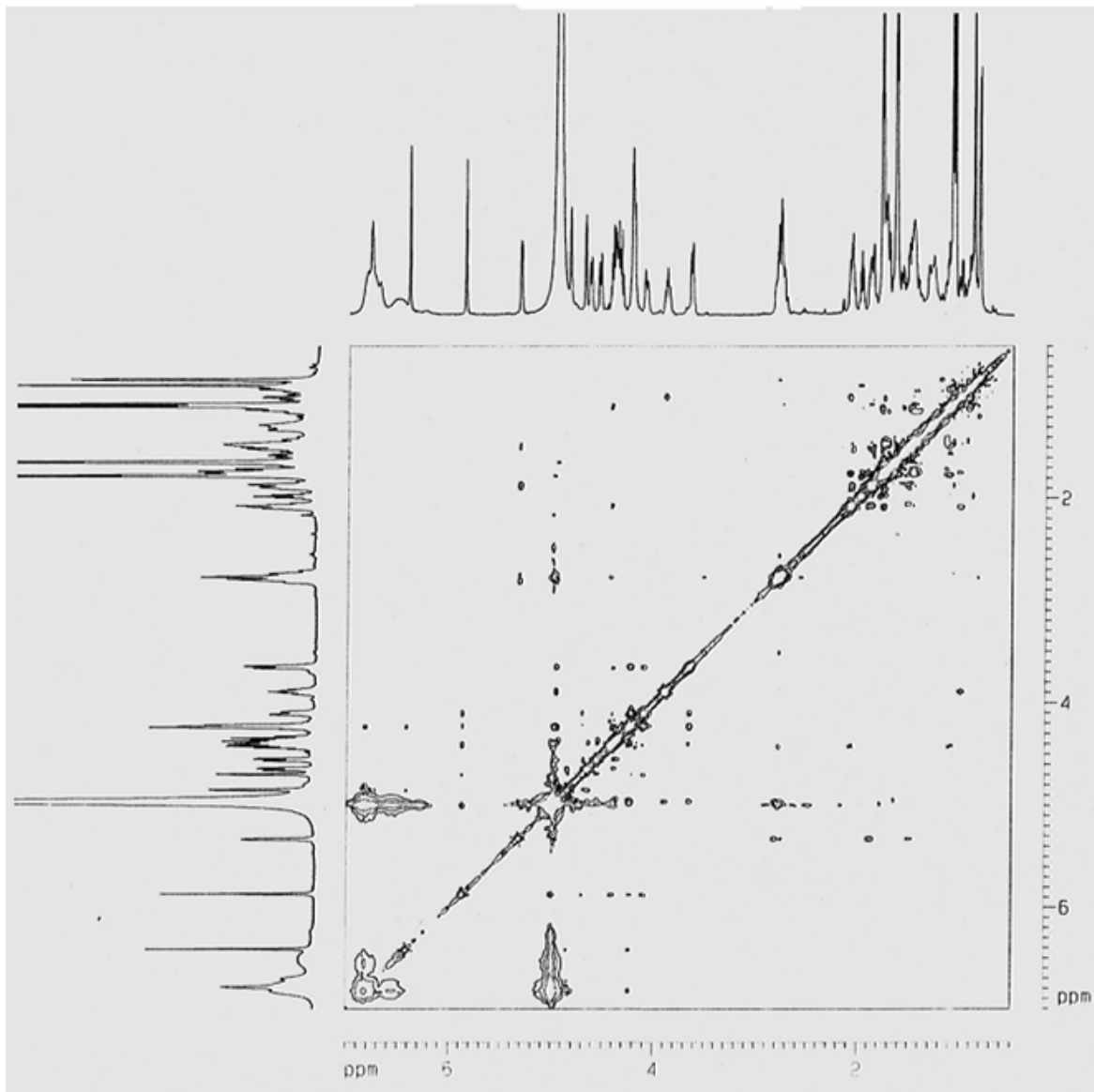
**Figura II.19.** Espectro de RMN COSY (500 MHz, Piridina- $d_5$ ) da substância **11** (*epi*-Solamargina)



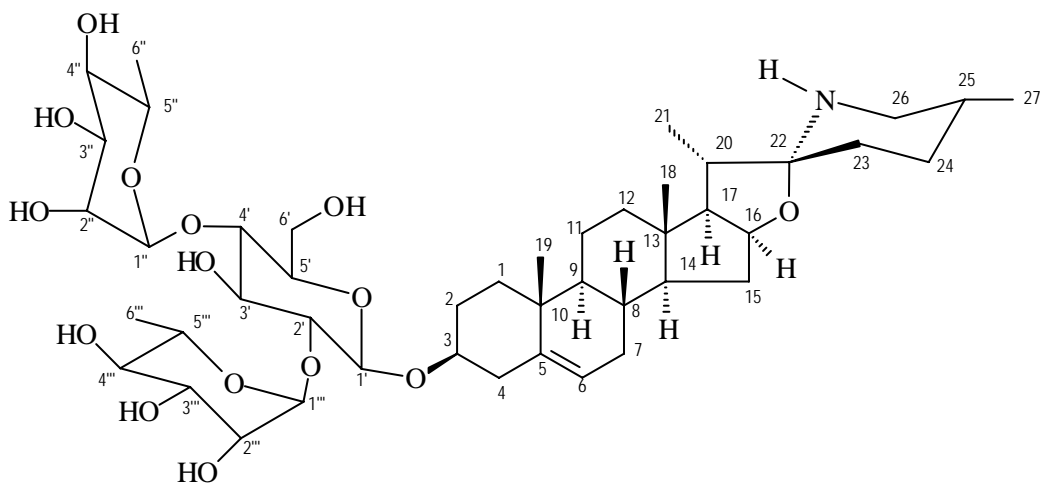


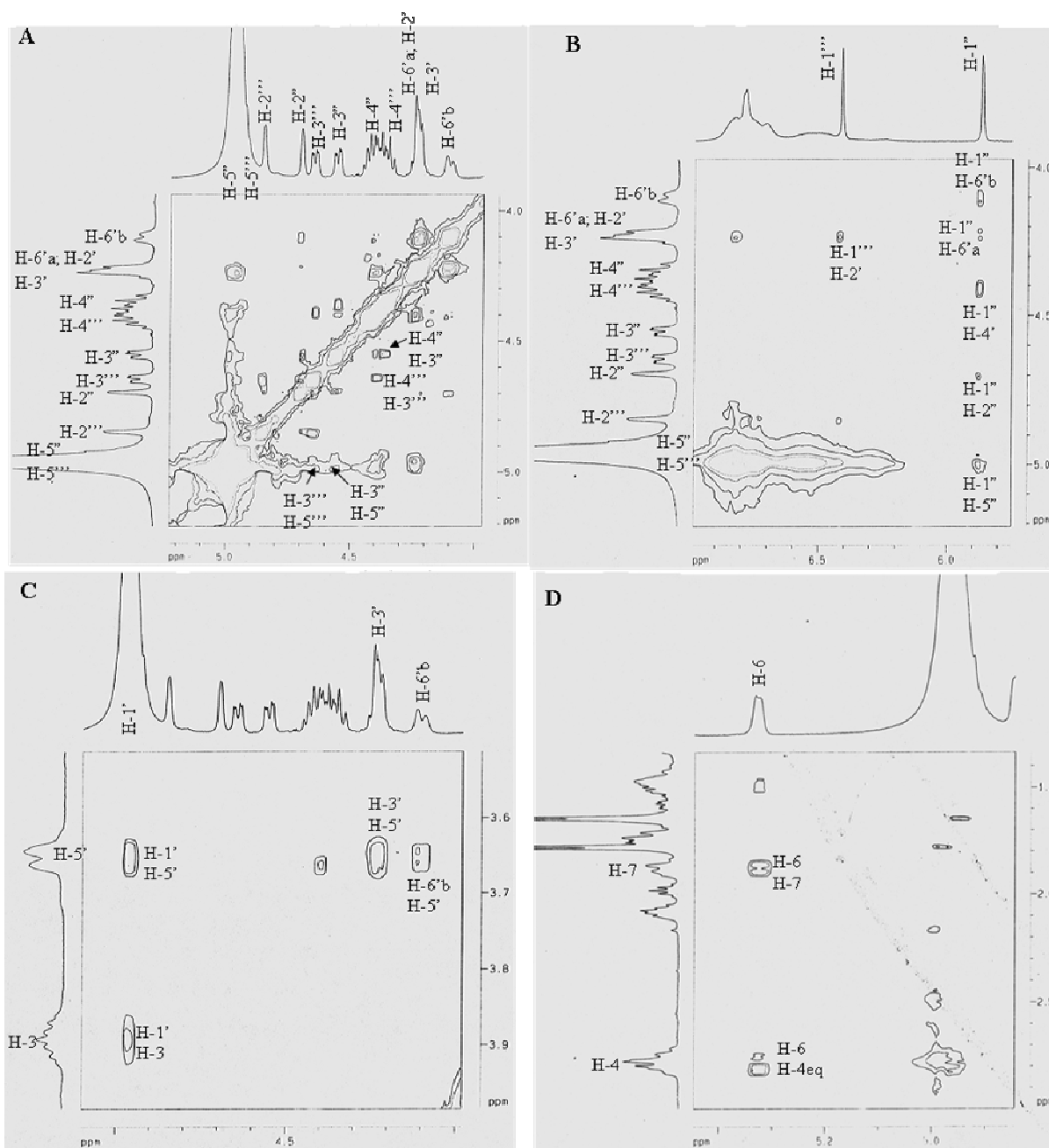
**Figura II.20.** Espectro de RMN COSY (500 MHz, Piridina-*d*<sub>5</sub>) da substância **11** (*epi*-Solamargina). Regiões ampliadas: **A** ( $\delta_{\text{H}}$  3,7-4,1x1,8-2,9 ppm), **B** ( $\delta_{\text{H}}$  4,0-4,5x3,5-3,8 ppm), **C** ( $\delta_{\text{H}}$  4,0-5,0x4,0-5,0 ppm) e **D** ( $\delta_{\text{H}}$  5,8-6,5x4,6-5,0 ppm)



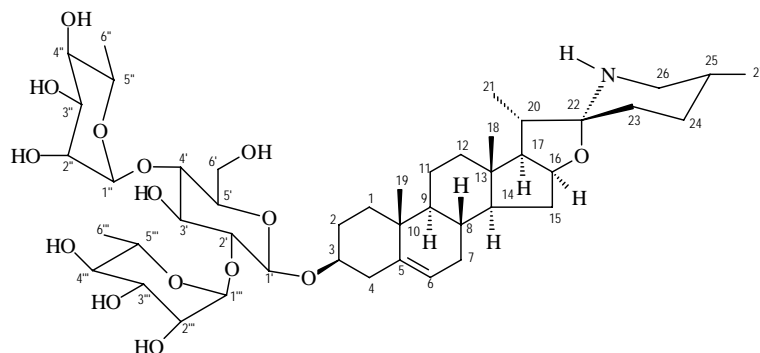


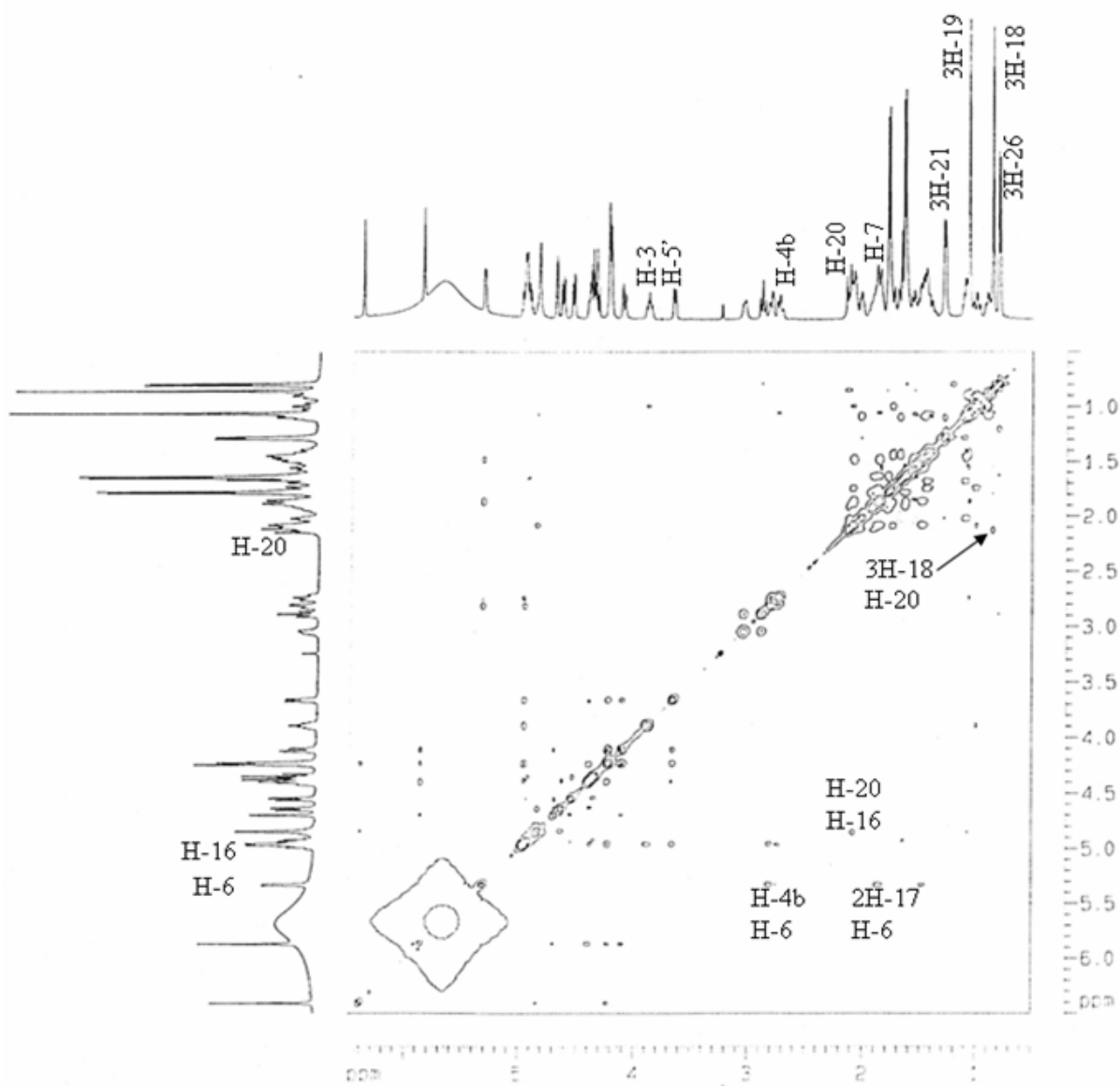
**Figura II.21.** Espectro de RMN NOESY (500 MHz, Piridina- $d_5$ ) da substância **10** (Solamargina)



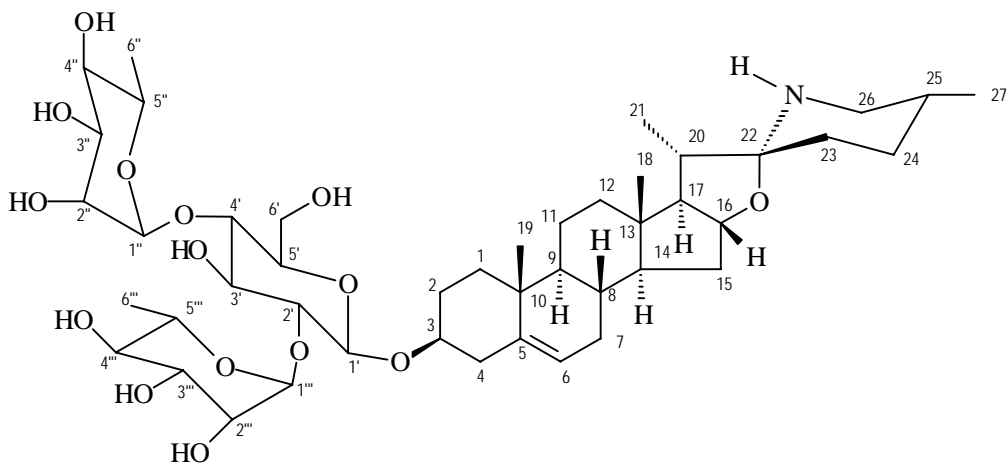


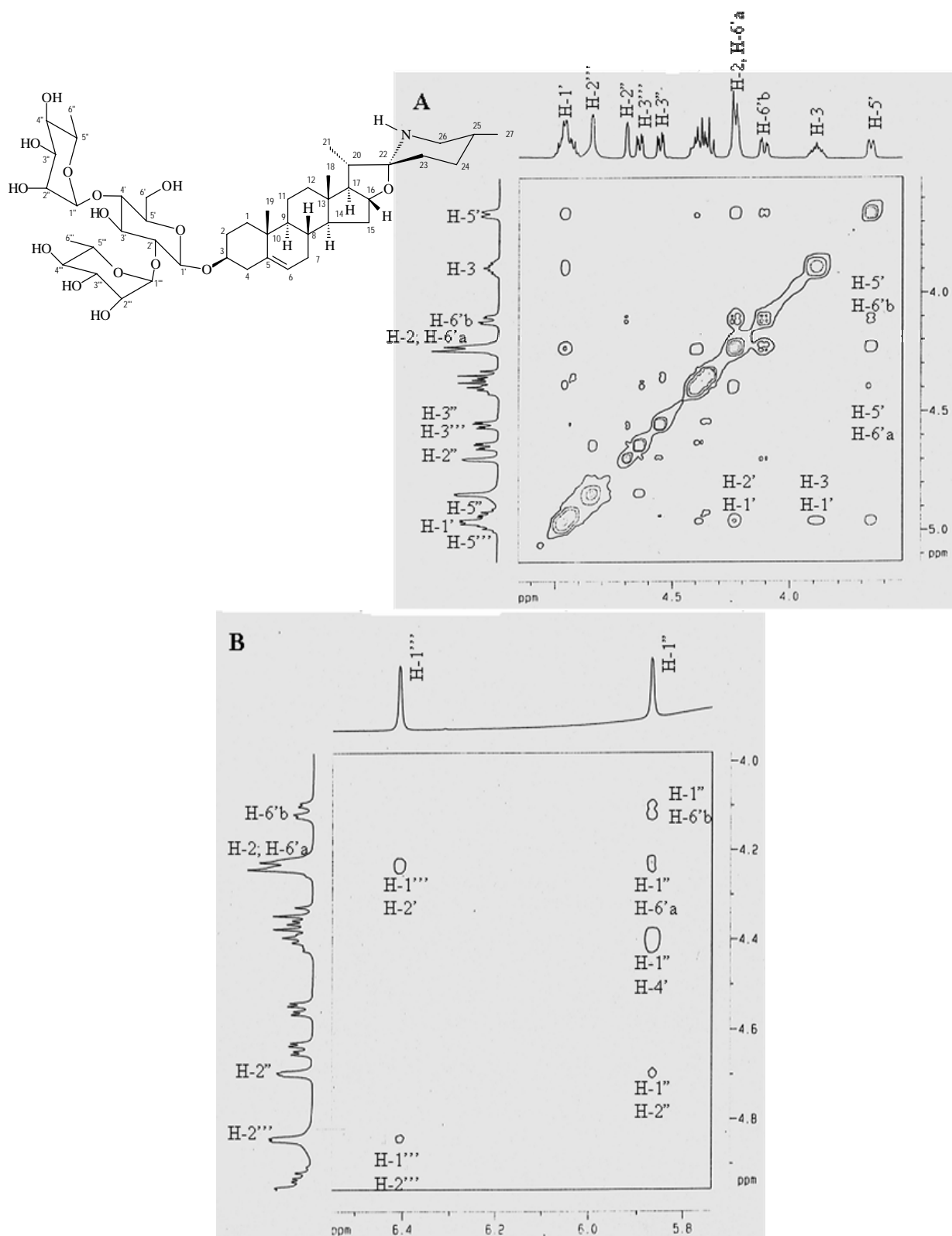
**Figura II.22.** Espectro de RMN NOESY (500 MHz, Piridina- $d_5$ ). Regiões ampliadas: **A** ( $\delta_H$  4,0-5,2x4,0-5,2 ppm), **B** ( $\delta_H$  5,8-6,9x4,0-5,2 ppm), **C** ( $\delta_H$  4,0-5,1x3,5-4,0 ppm) e **D** ( $\delta_H$  4,9-5,4x1,4-3,0 ppm) da substância **10** (Solamargina)



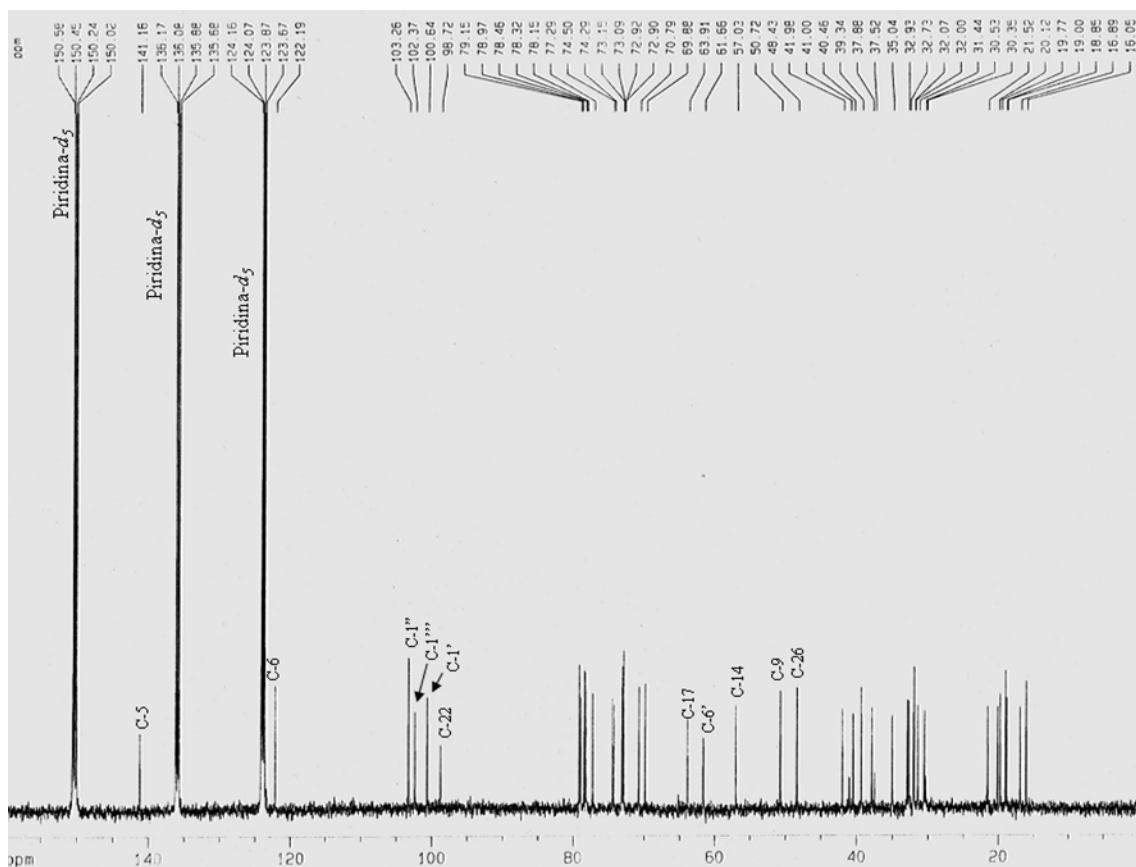


**Figura II.23.** Espectro de RMN NOESY (500 MHz, Piridina- $d_5$ ) da substância **11** (*epi*-Solamargina)

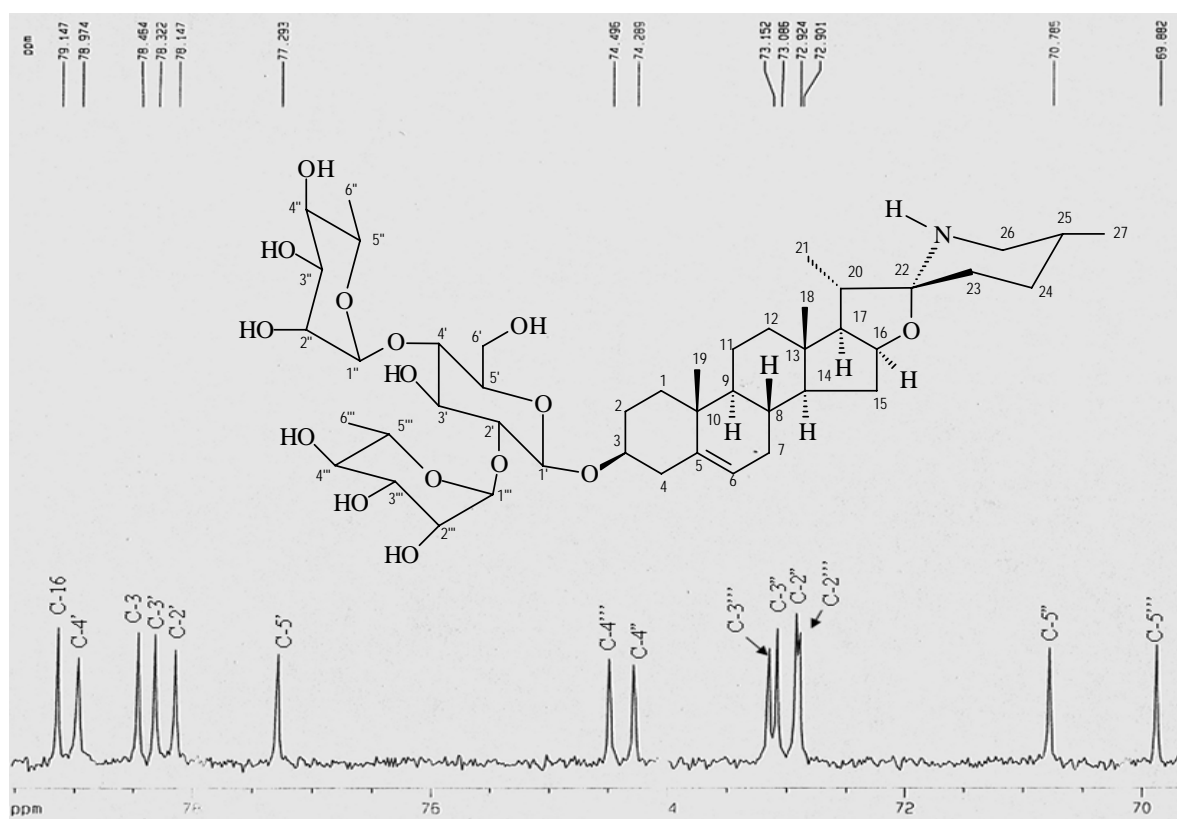




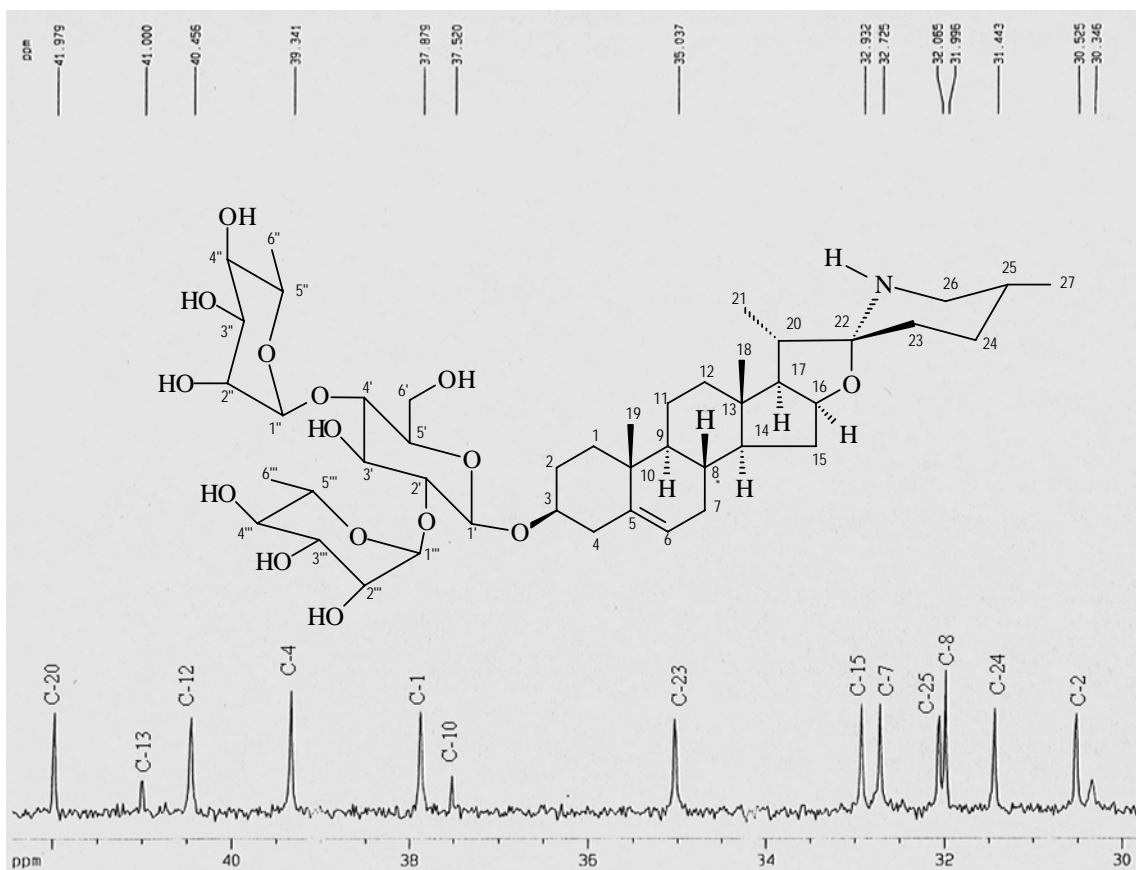
**Figura II.24.** Espectro de RMN NOESY (500 MHz, Piridina- $d_5$ ). Regiões ampliadas: **A** ( $\delta_{\text{H}}$  3,5-5,0x3,5-5,0 ppm) e **B** ( $\delta_{\text{H}}$  5,8-6,5x4,0-5,0 ppm) da substância **11** (*epi*-Solamargina)



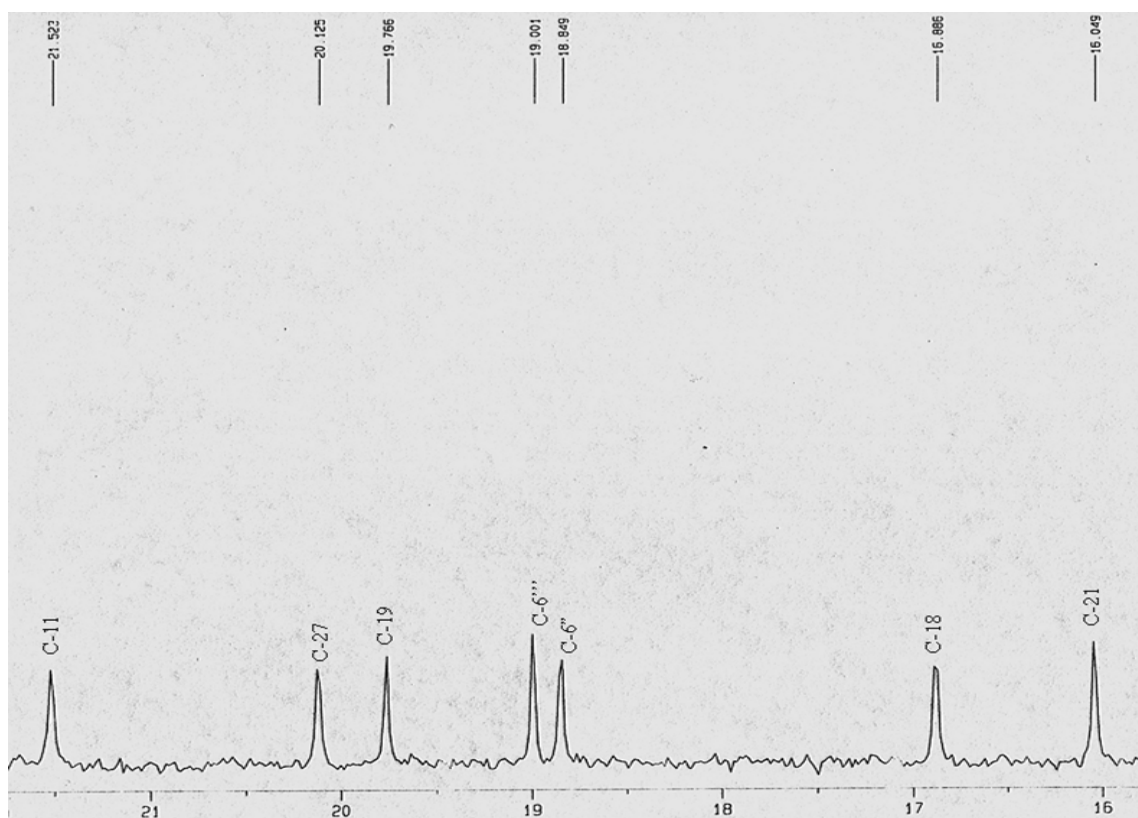
**Figura II.25.** Espectro de RMN de  $^{13}\text{C}$  (125 MHz, Piridina- $d_5$ ) da substância **10** (Solamargina)



**Figura II.26.** Espectro de RMN de  $^{13}\text{C}$  (125 MHz, Piridina- $d_5$ ) ampliação da região  $\delta_{\text{C}}$  69-80 ppm da substância **10** (Solamargina)

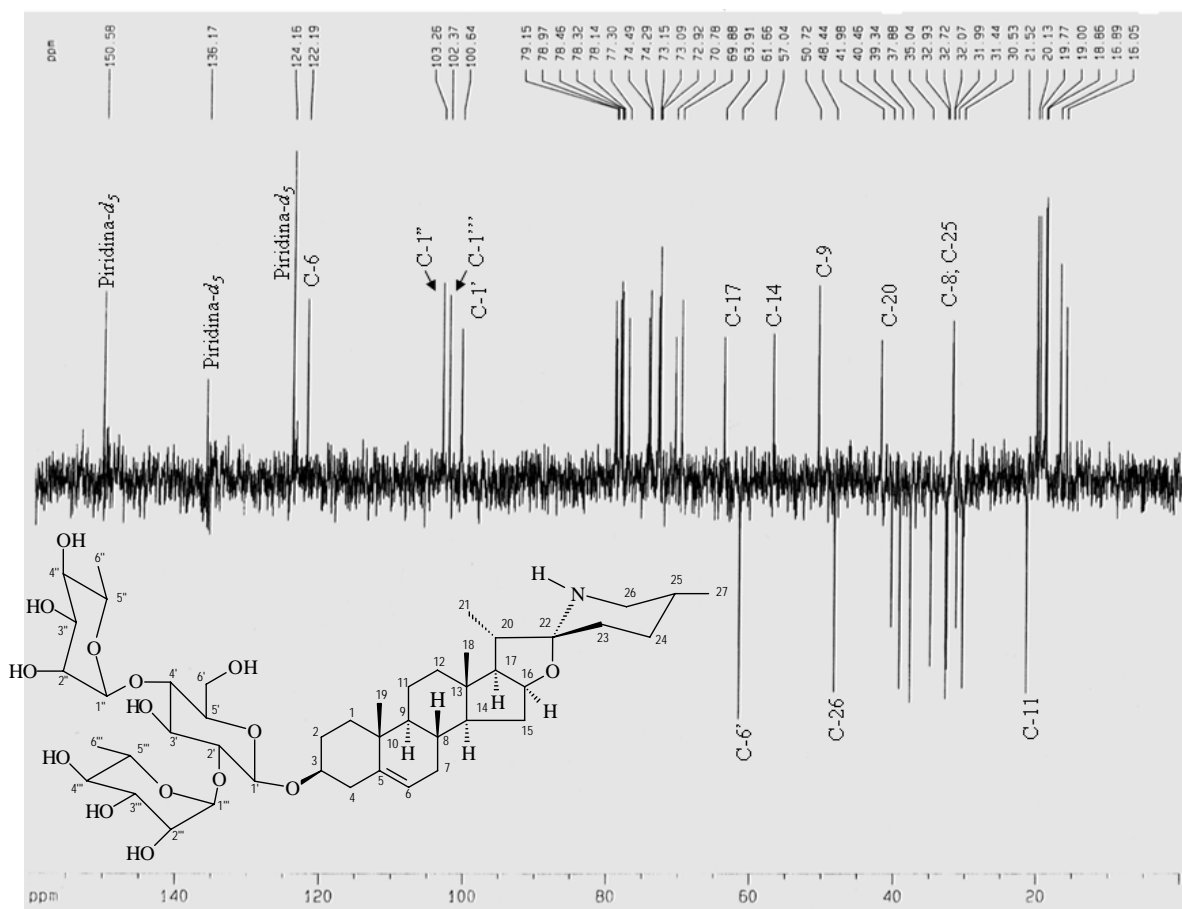


**Figura II.27.** Espectro de RMN de  $^{13}\text{C}$  (125 MHz, Piridina- $d_5$ ) ampliação da região  $\delta_{\text{C}}$  30-42 ppm da substância **10** (Solamargina)

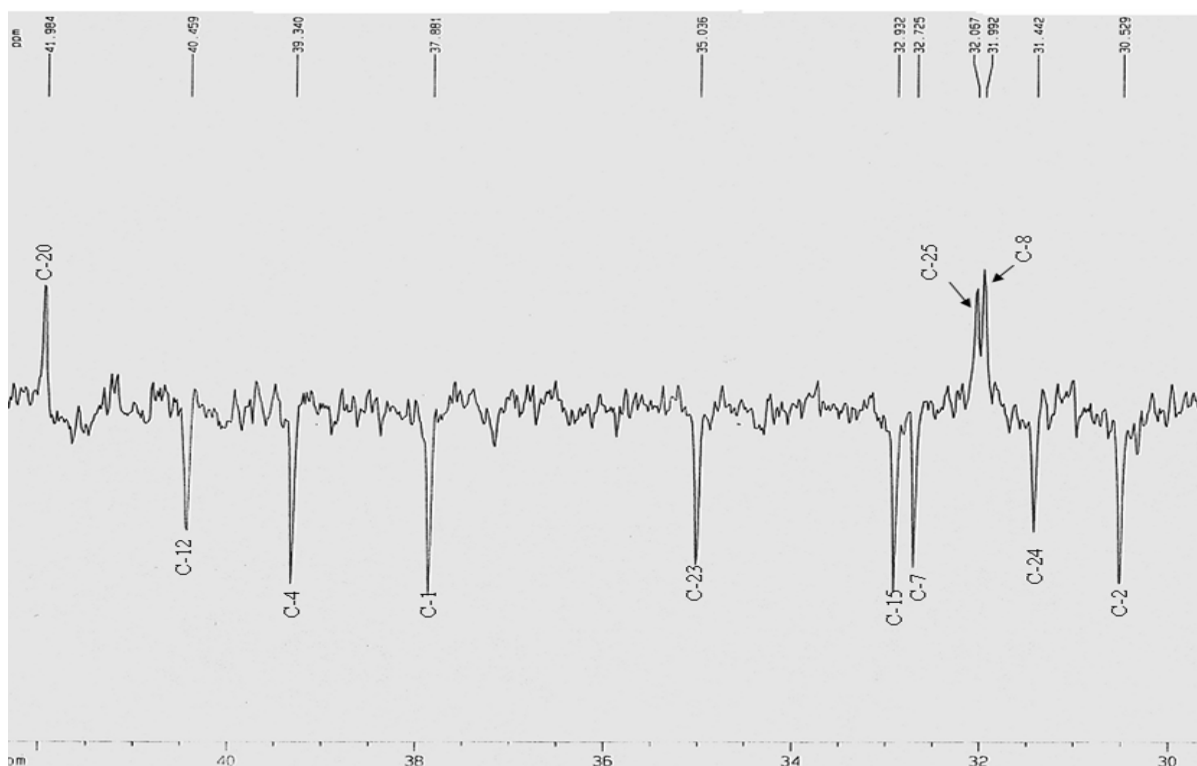


**Figura II.28.** Espectro de RMN de  $^{13}\text{C}$  (125 MHz, Piridina- $d_5$ ) ampliação da região  $\delta_{\text{C}}$  16-22 ppm da substância **10** (Solamargina)

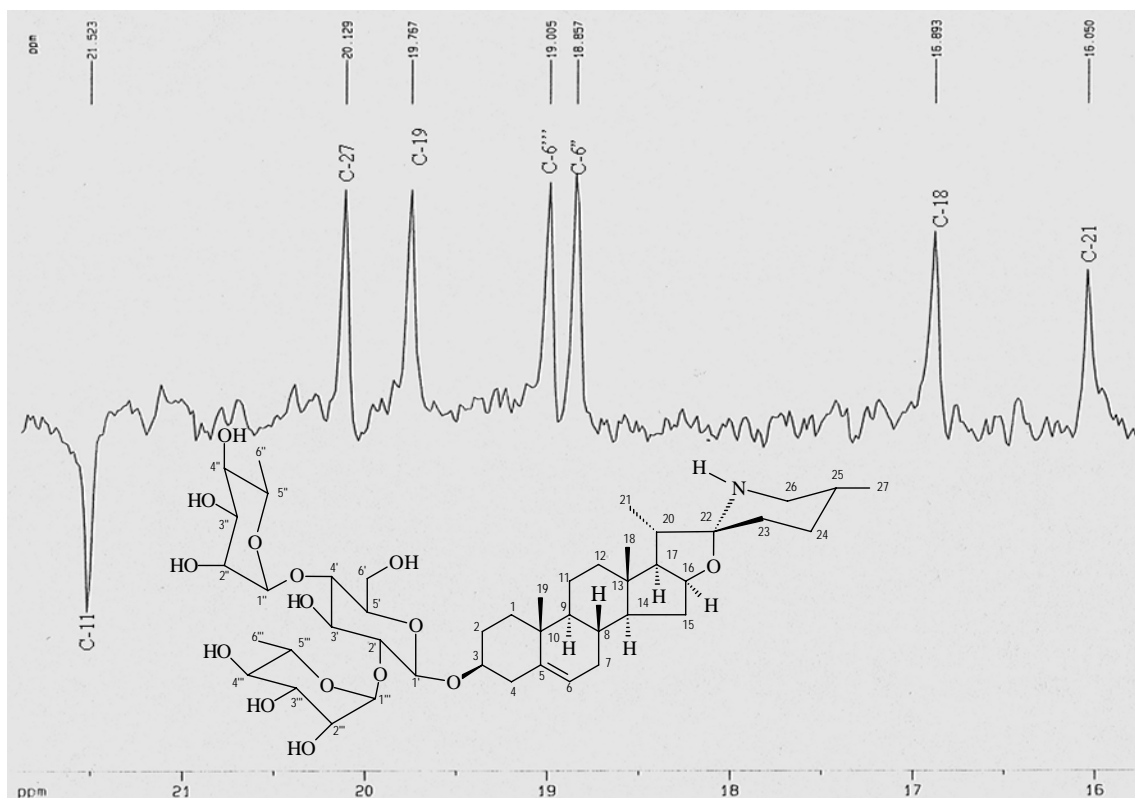




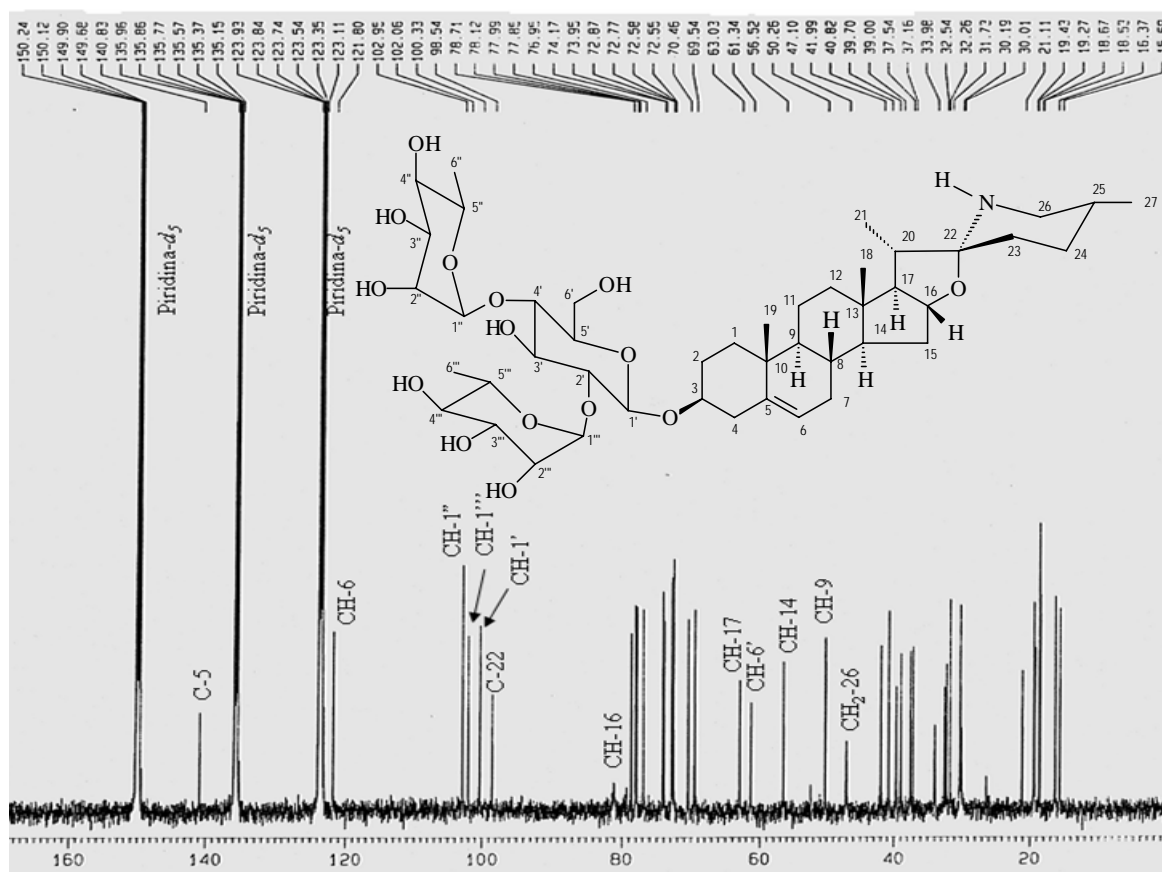
**Figura II.29.** Espectro de RMN de  $^{13}\text{C}$  DEPT ( $\theta=135^\circ$ , 125 MHz, Piridina- $d_5$ ) da substância **10** (Solamargina)



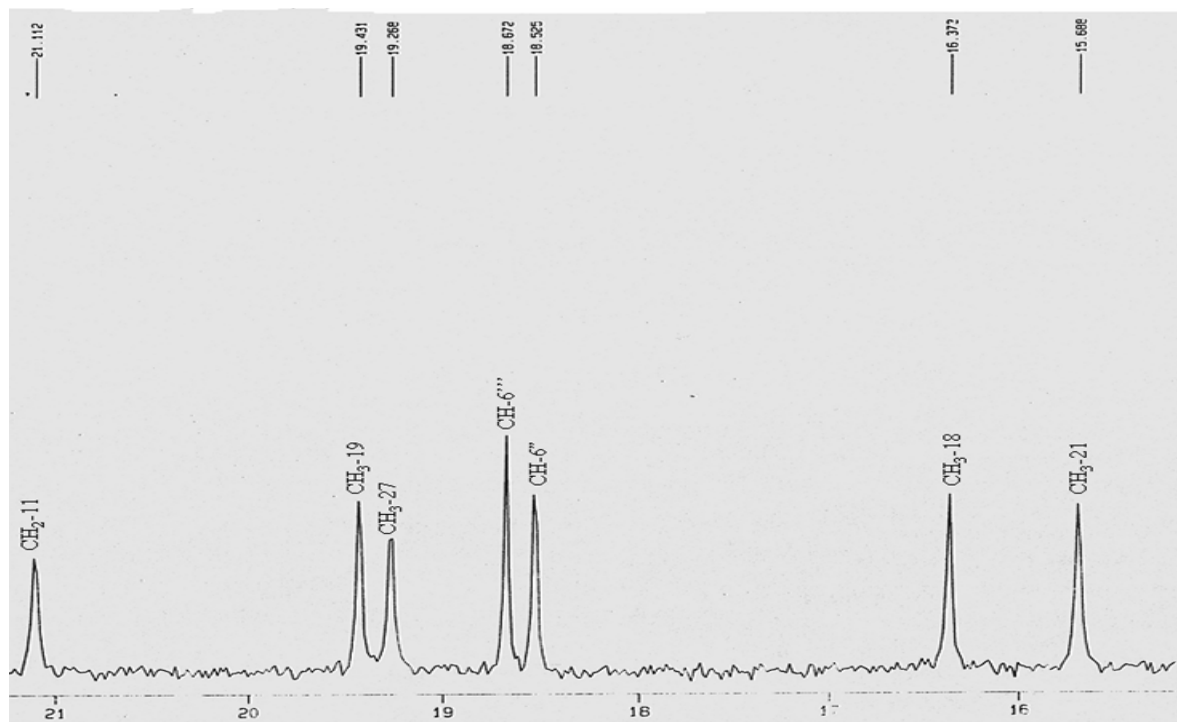
**Figura II.30.** Espectro de RMN de  $^{13}\text{C}$  DEPT ( $\theta=135^\circ$ , 125 MHz, Piridina- $d_5$ ) ampliação da região  $\delta_{\text{C}}$  30-42 ppm da substância **10** (Solamargina)



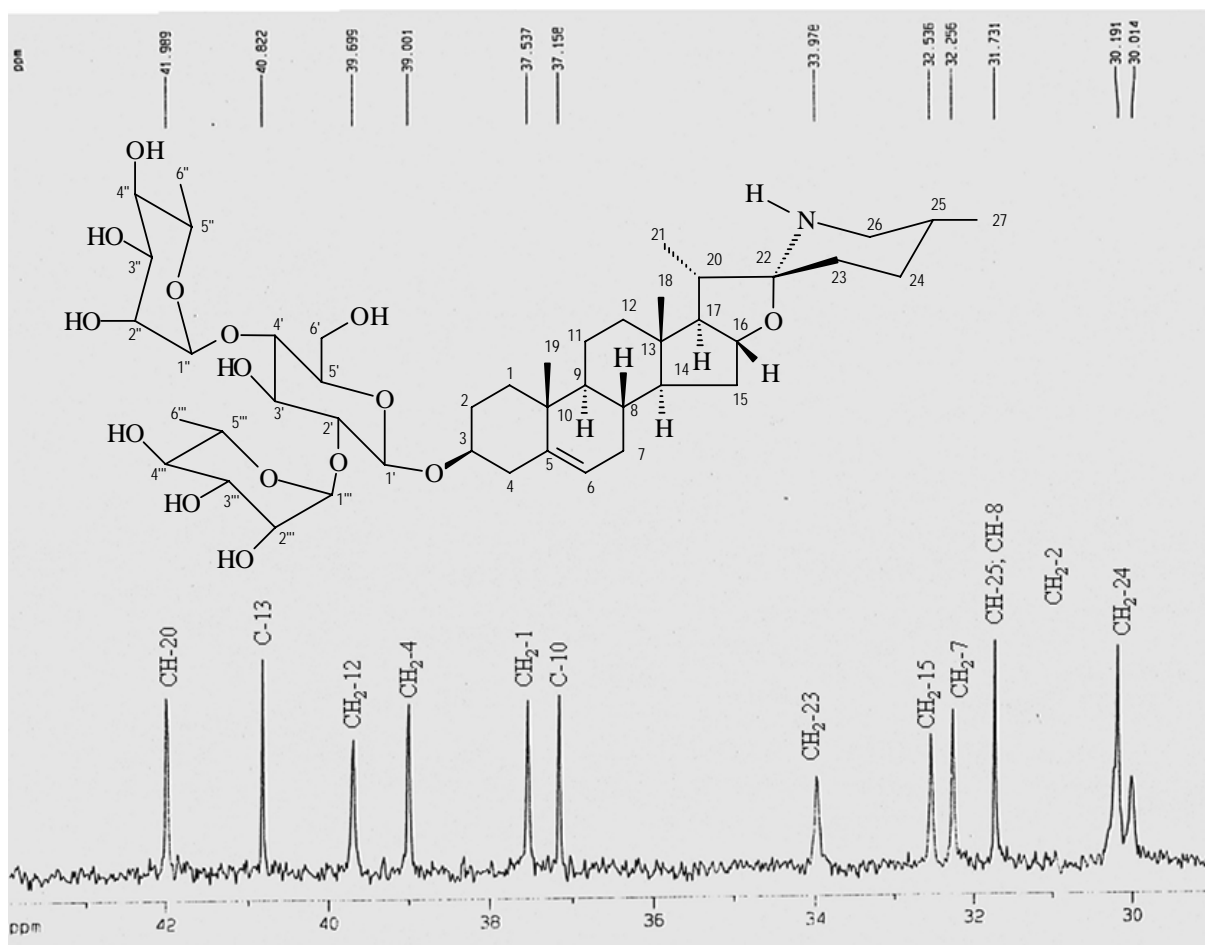
**Figura II.31.** Espectro de RMN de  $^{13}\text{C}$  DEPT ( $\theta=135^\circ$ , 125 MHz, Piridina- $d_5$ ) ampliação da região  $\delta_{\text{C}}$  16-22 ppm da substância **10** (Solamargina)



**Figura II.32.** Espectro de RMN de  $^{13}\text{C}$  (125 MHz, Piridina- $d_5$ ) da substância **11** (*epi*-Solamargina)



**Figura II.33.** Espectro de RMN de  $^{13}\text{C}$  (125 MHz, Piridina- $d_5$ ) ampliação da região  $\delta_{\text{C}}$  15-22 ppm da substância **11** (*epi*-Solamargina)



**Figura II.34.** Espectro de RMN de  $^{13}\text{C}$  (125 MHz, Piridina- $d_5$ ) ampliação da região  $\delta_{\text{C}}$  29-43 ppm da substância **11** (*epi*-Solamargina)

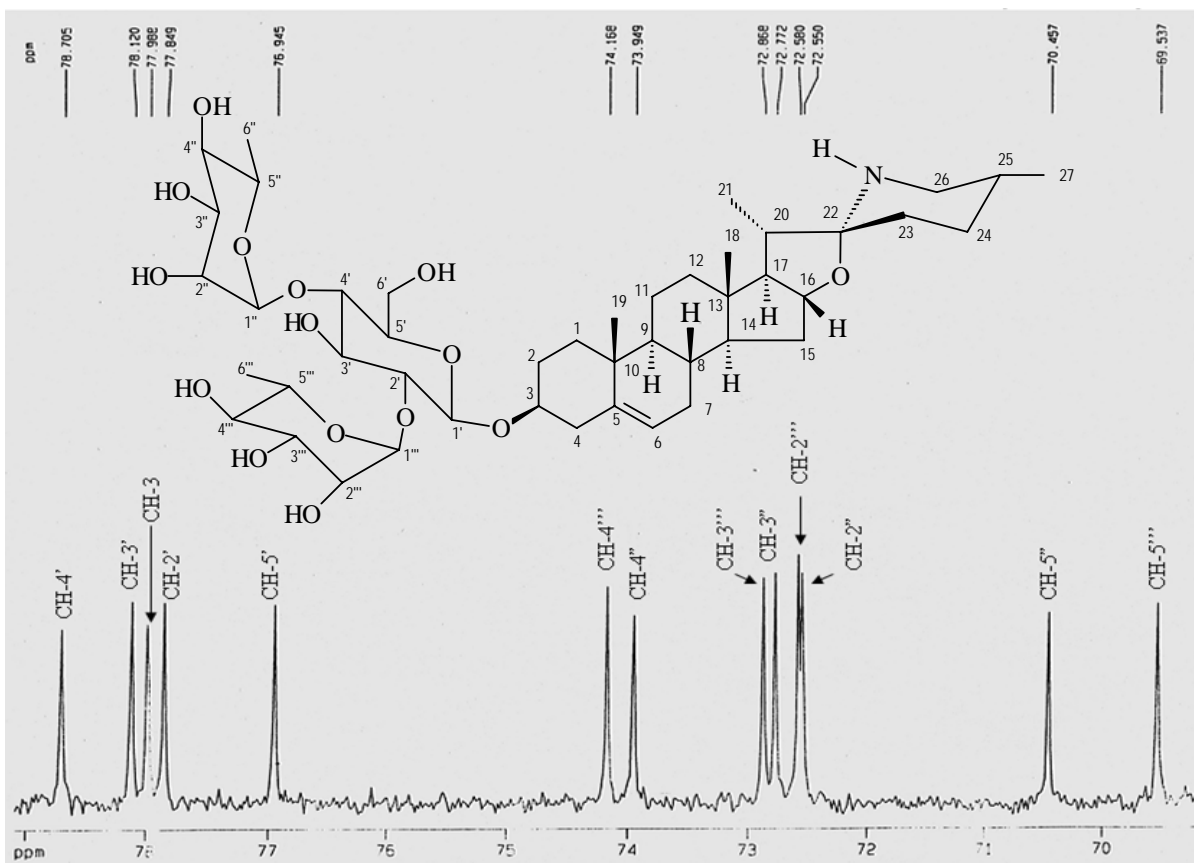


Figura II.35. Espectro de RMN de  $^{13}\text{C}$  (125 MHz, Piridina- $d_5$ ) ampliação da região  $\delta_{\text{C}}$  68-79 ppm da substância **11** (*epi*-Solamargina)

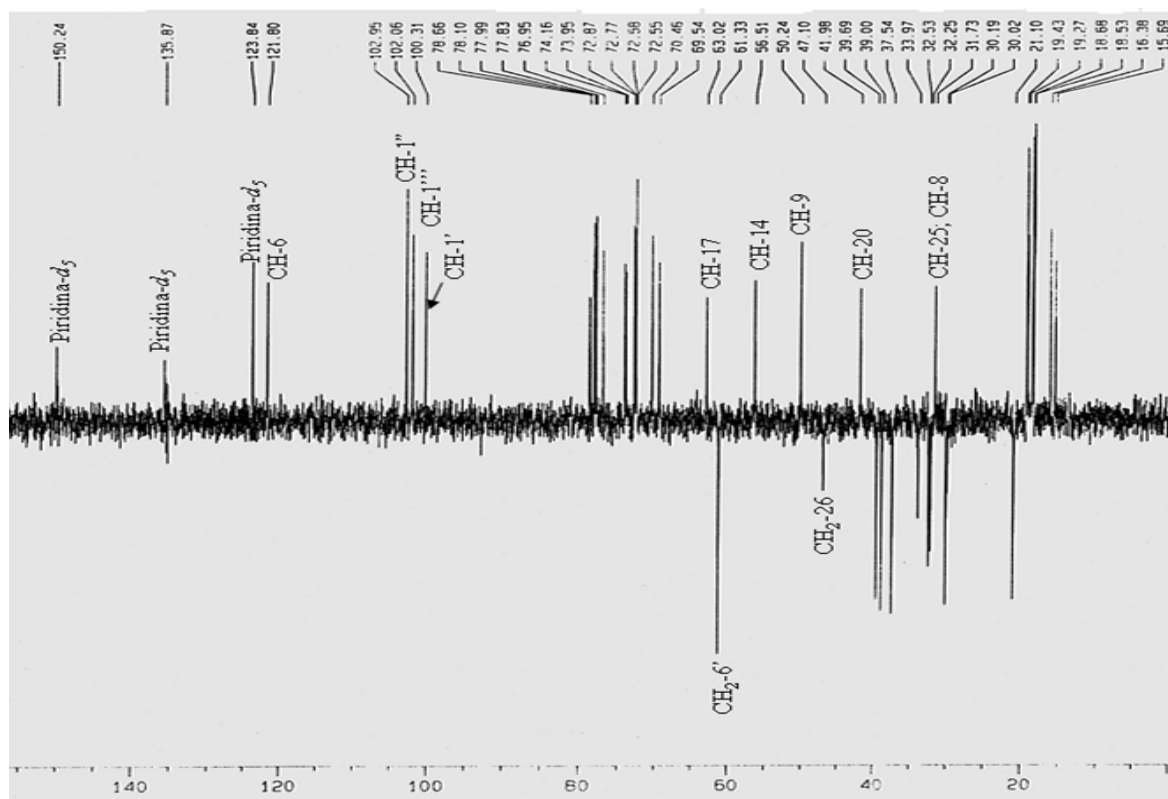
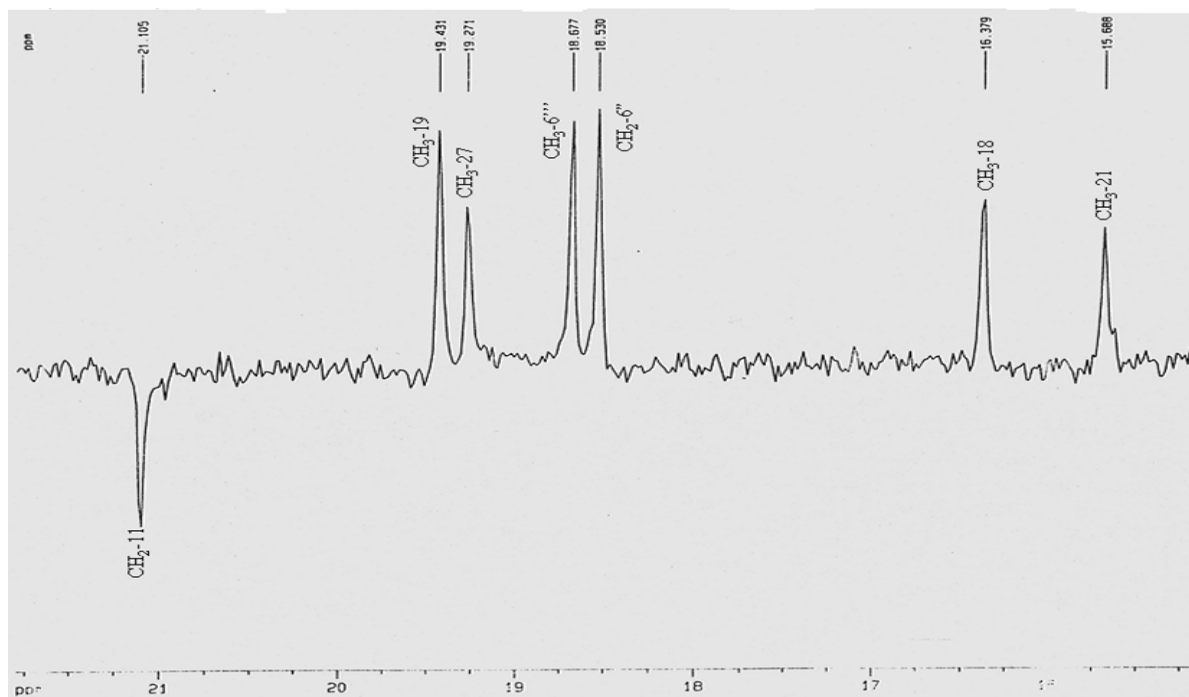
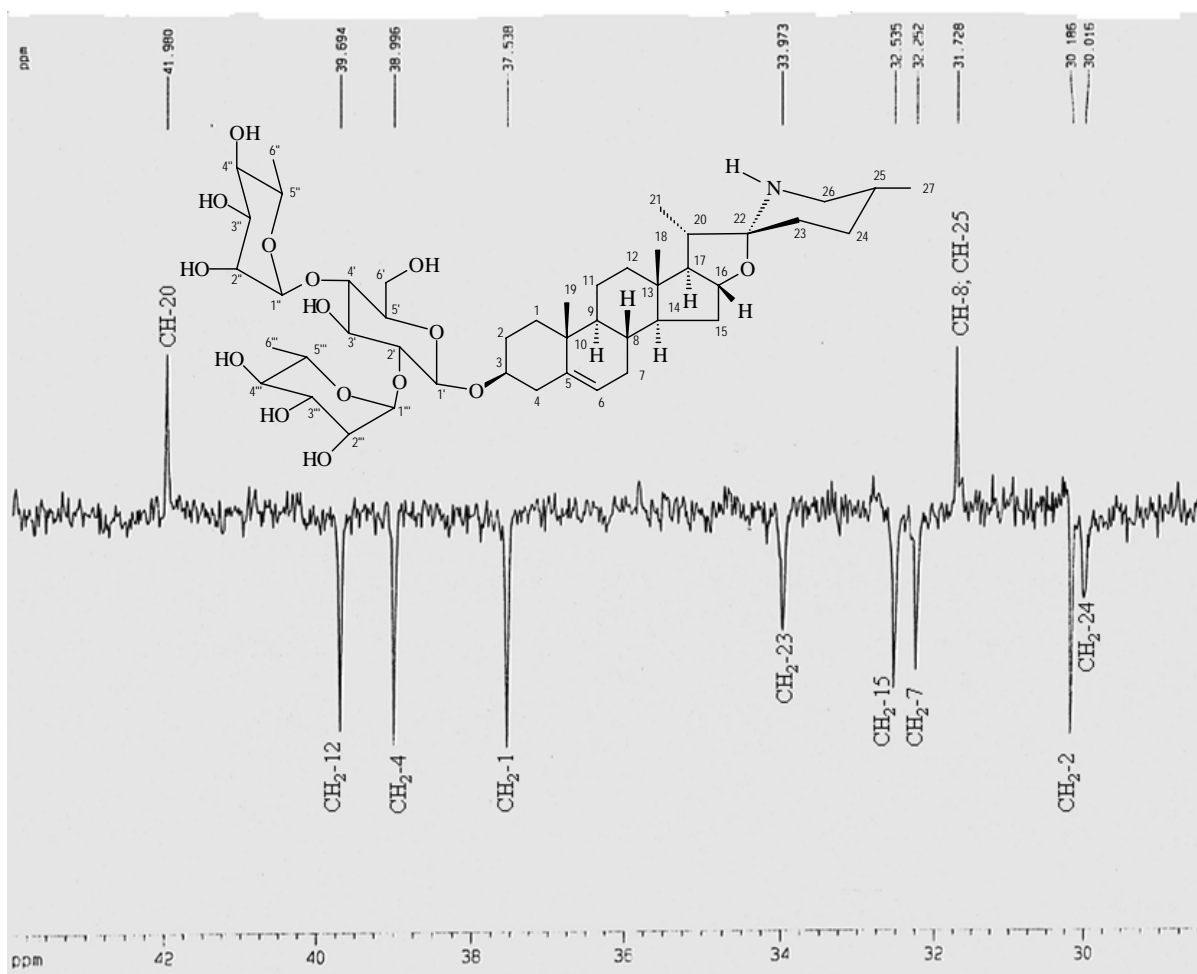


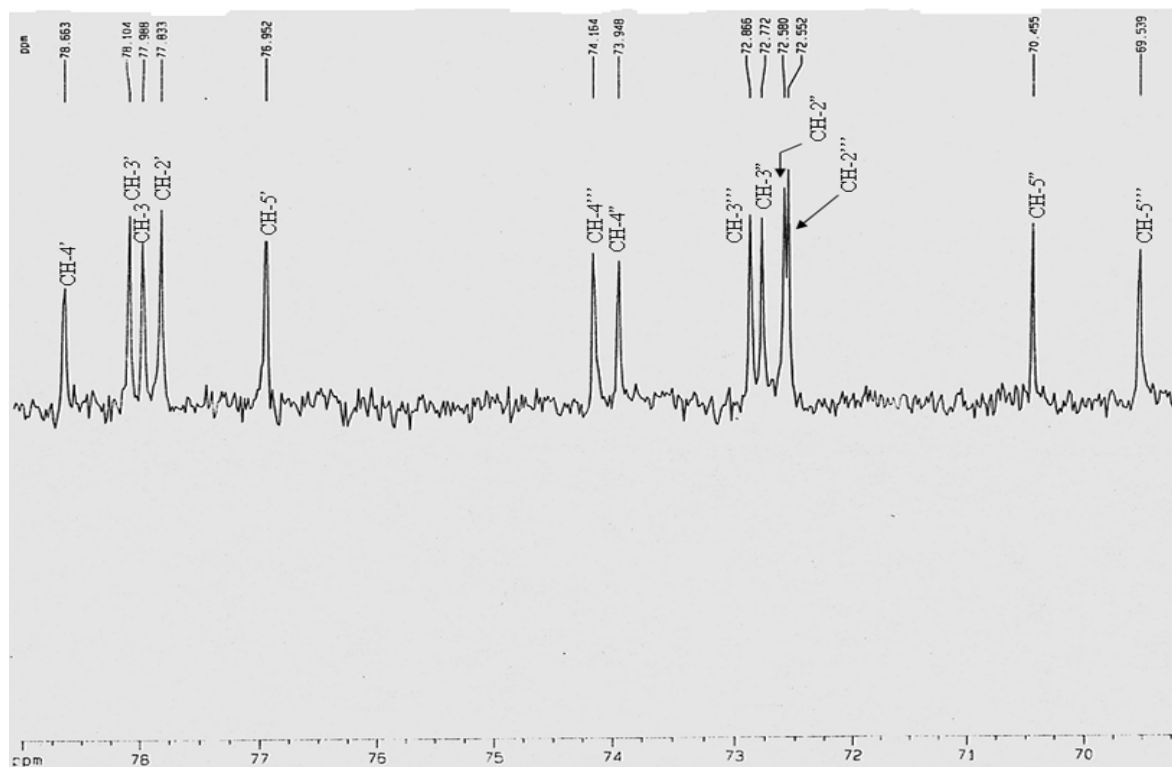
Figura II.36. Espectro de RMN de  $^{13}\text{C}$  DEPT ( $\theta=135^\circ$ , 125 MHz, Piridina- $d_5$ ) da substância **11** (*epi*-Solamargina)



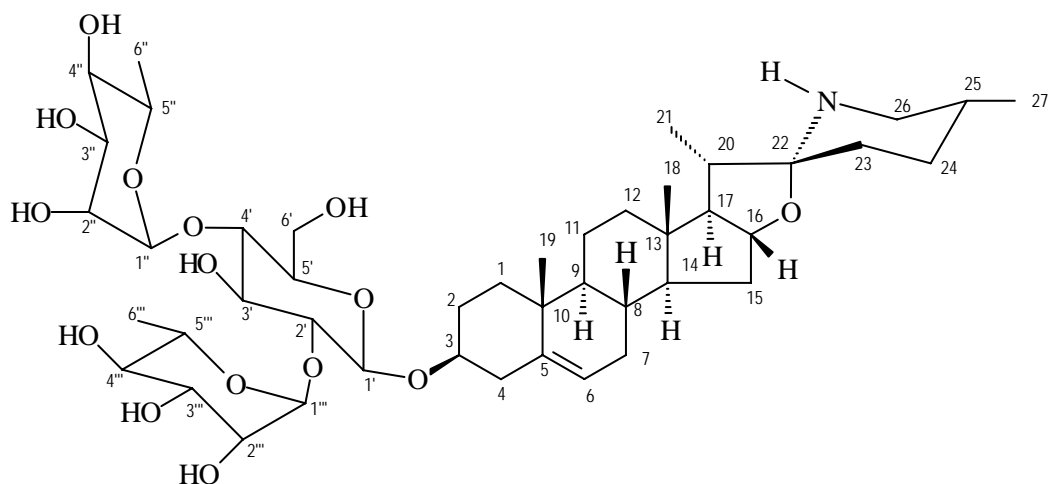
**Figura II.37.** Espectro de RMN de  $^{13}\text{C}$  DEPT ( $\theta=135^\circ$ , 125 MHz, Piridina- $d_5$ ) ampliação da região  $\delta_{\text{C}}$  15-22 ppm da substância **11** (*epi*-Solamargina)

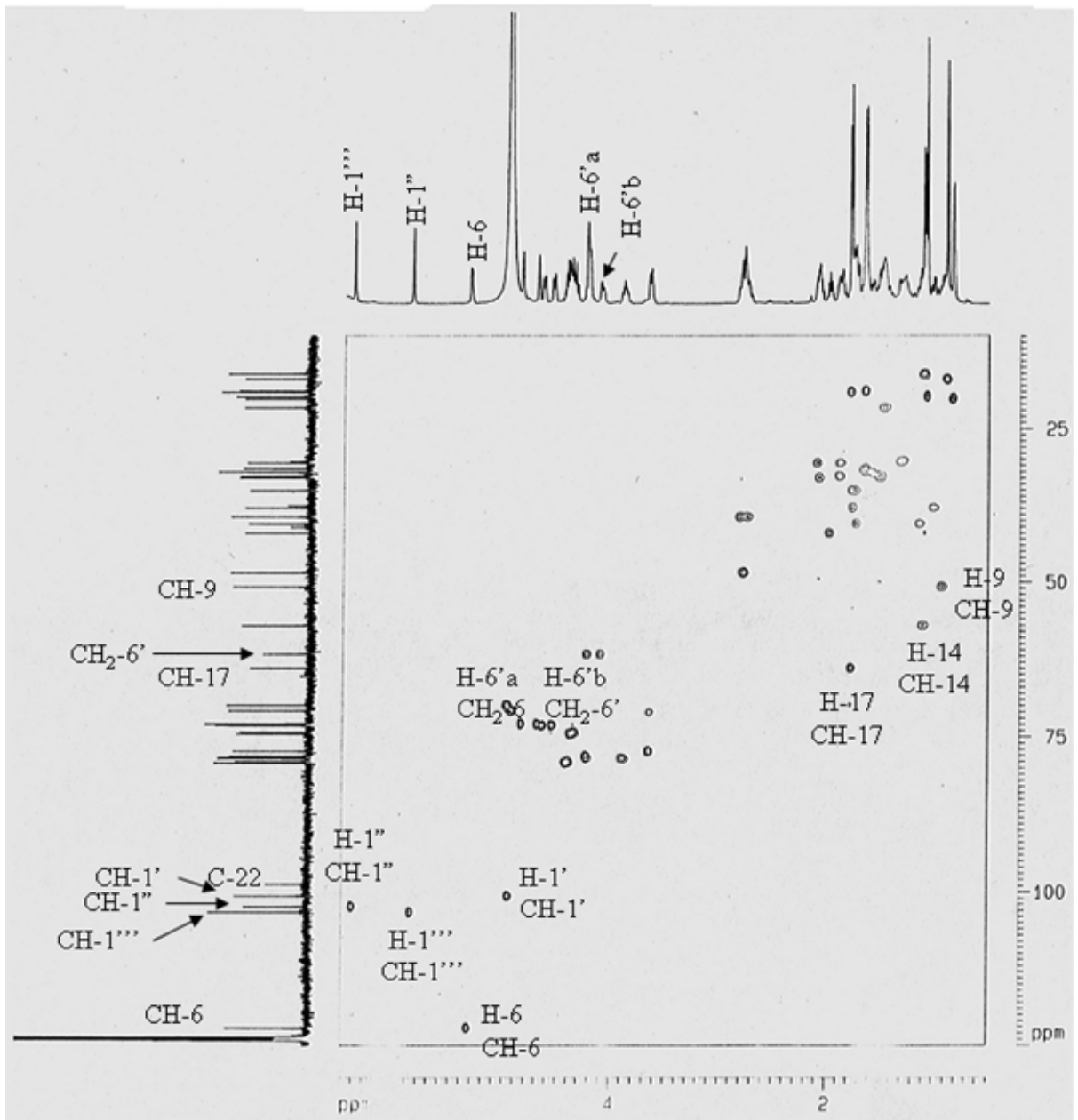


**Figura II.38.** Espectro de RMN de  $^{13}\text{C}$  DEPT ( $\theta=135^\circ$ , 125 MHz, Piridina- $d_5$ ) ampliação da região  $\delta_{\text{C}}$  30-42 ppm da substância **11** (*epi*-Solamargina)

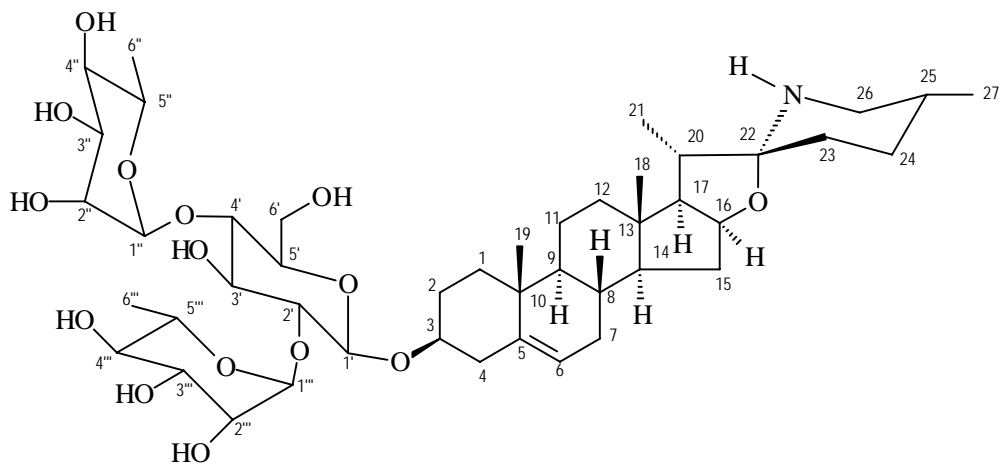


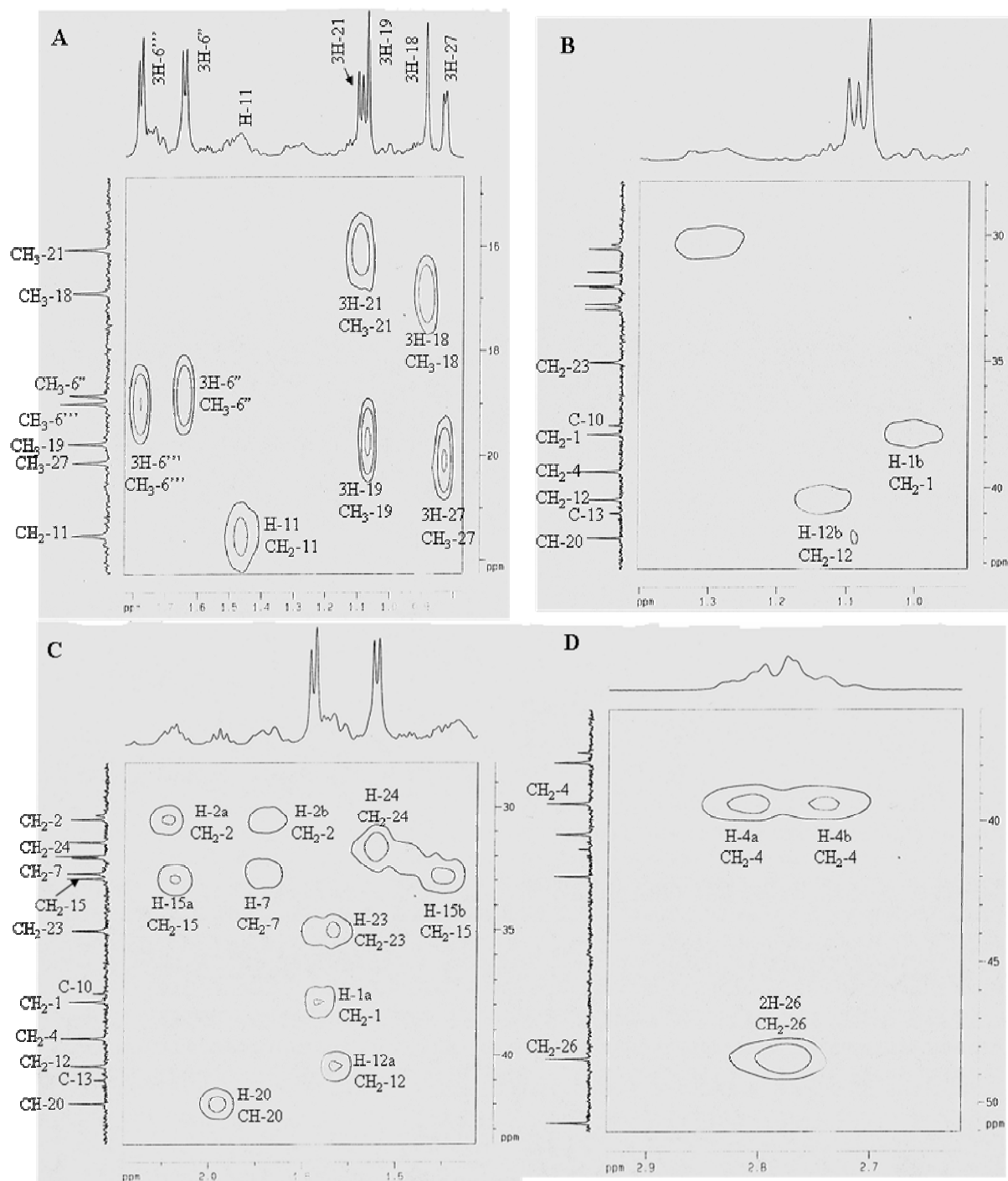
**Figura II.39.** Espectro de RMN de  $^{13}\text{C}$  DEPT ( $\theta=135^\circ$ , 125 MHz, Piridina- $d_5$ ) ampliação da região  $\delta_{\text{C}}$  69-79 ppm da substância **11** (*epi*-Solamargina)



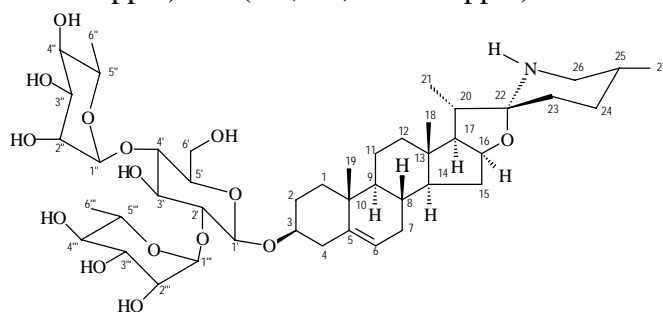


**Figura II.40.** Espectro de RMN HMQC ( $^1\text{H}$  - 500 MHz,  $^{13}\text{C}$  - 125 MHz, Piridina- $d_5$ ) da substância **10** (Solamargina)

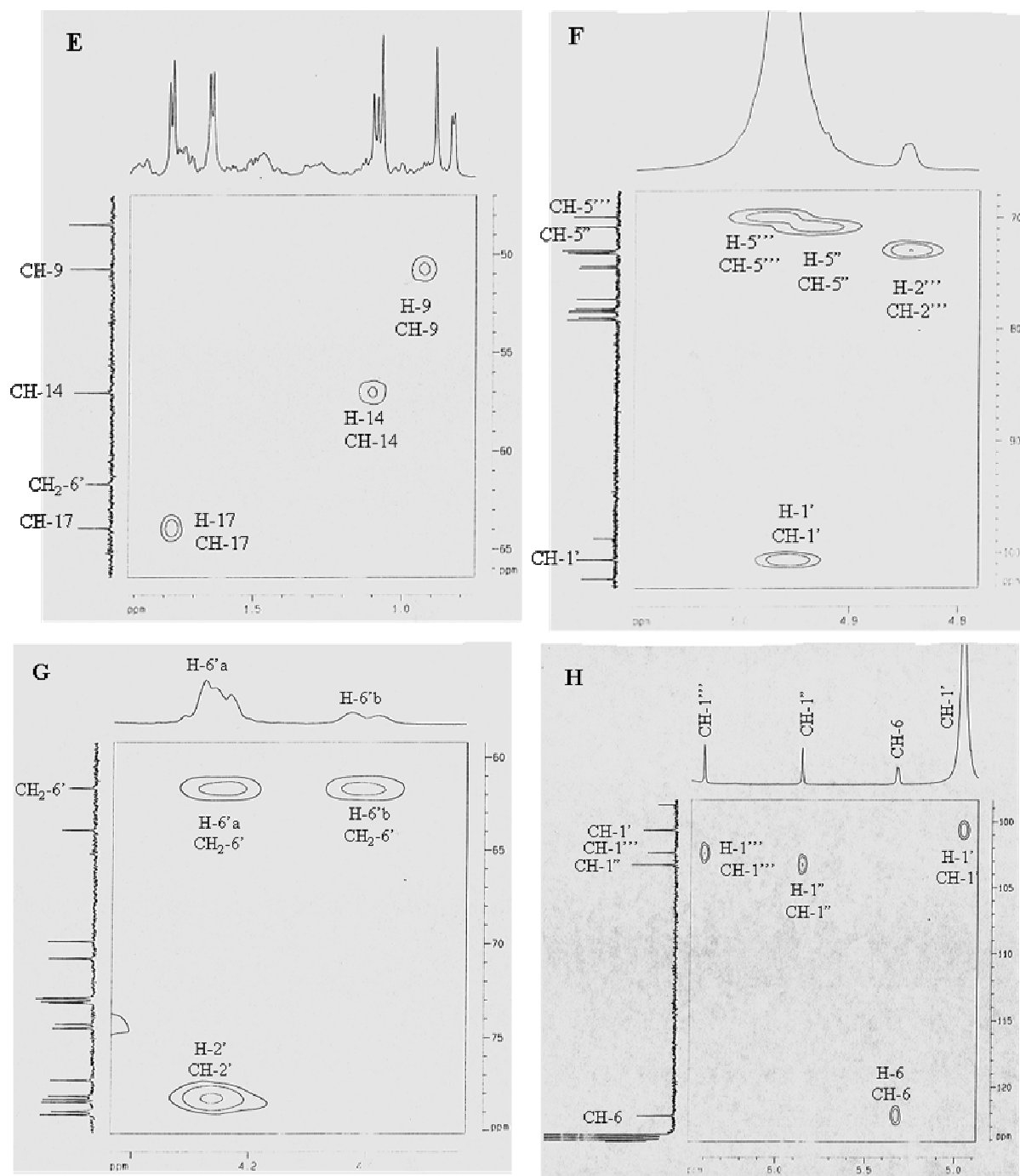




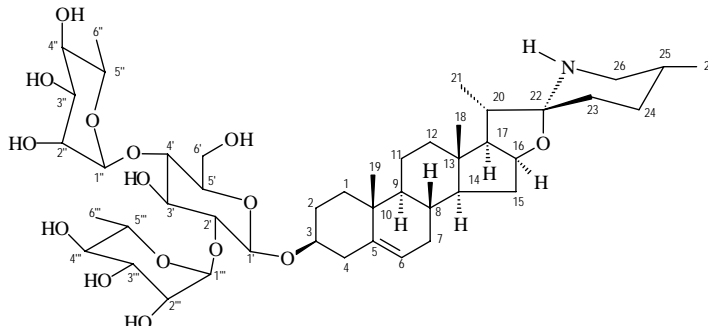
**Figura II.41.** Espectro de RMN HMQC ( $^1\text{H}$  - 500 MHz,  $^{13}\text{C}$  - 125 MHz, Piridina- $d_5$ ) da substância **10** (Solamargina). Regiões ampliadas: **A** ( $\delta$  0,8-1,8x15-22 ppm), **B** ( $\delta$  0,9-1,4x28-43 ppm), **C** ( $\delta$  1,3-2,2x29-43 ppm) e **D** ( $\delta$  2,6-2,9x37-51 ppm)

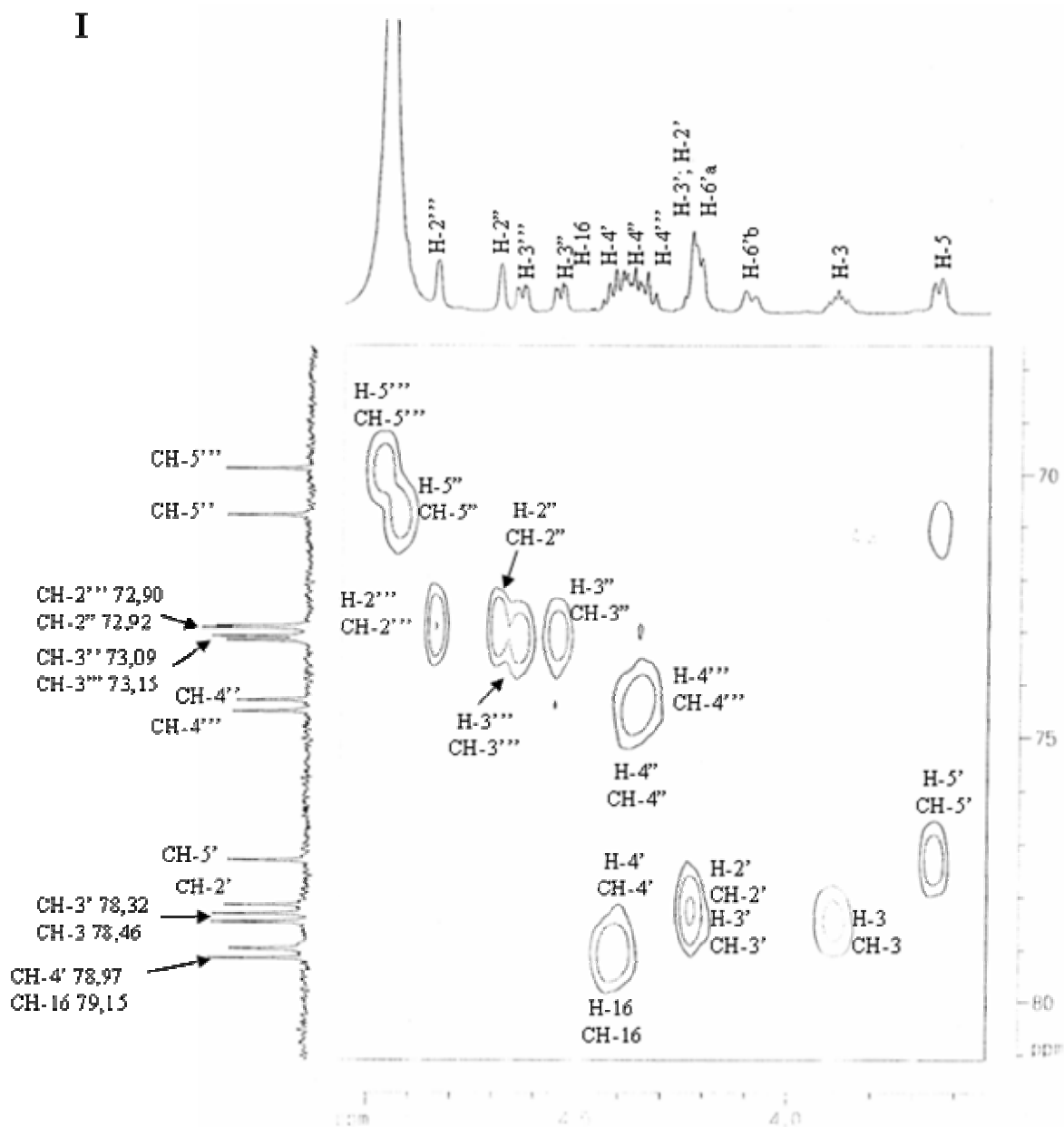






**Figura II.42.** Espectro de RMN HMQC ( $^1\text{H}$  - 500 MHz,  $^{13}\text{C}$  - 125 MHz, Piridina- $d_5$ ) da substância **10** (Solamargina). Regiões ampliadas: **E** ( $\delta$  0,8-1,9x47-66 ppm), **F** ( $\delta$  4,8-5,1x68-103 ppm), **G** ( $\delta$  4,0-4,3x60-80 ppm) e **H** ( $\delta$  4,9-6,5x99-124 ppm)





**Figura II.43.** Espectro de RMN HMQC ( $^1\text{H}$  - 500 MHz,  $^{13}\text{C}$  - 125 MHz, Piridina- $d_5$ ) da substância **10** (Solamargina). Região ampliada: **I** ( $\delta$  3,8-5,0x68-81 ppm)

